



ProSAFE Plus Configuration Utility

User Manual

November 2016
202-10524-07

350 East Plumeria Drive
San Jose, CA 95134
USA



Support

Thank you for purchasing this NETGEAR product. You can visit www.netgear.com/support to register your product, get help, access the latest downloads and user manuals, and join our community. We recommend that you use only official NETGEAR support resources.

Conformity

For the current EU Declaration of Conformity, visit http://kb.netgear.com/app/answers/detail/a_id/11621.

Compliance

For regulatory compliance information, visit <http://www.netgear.com/about/regulatory>.

See the regulatory compliance document before connecting the power supply.

Trademarks

© NETGEAR, Inc., NETGEAR and the NETGEAR Logo are trademarks of NETGEAR, Inc. Any non-NETGEAR trademarks are used for reference purposes only.

Revision History

Publication Part Number	Publish Date	Comments
202-10524-07	November 2016	Added note to the Set Up Static Link Aggregation Groups on page 14.
202-10524-06	August 2016	Revised the content entirely and updated the book format
202-10524-05	December 2012	Updated the book format
202-10524-04	May 2012	Added the LAG and registration features
202-10524-03	September 2010	Added the multicast and IGMP snooping features
202-10524-02	February 2010	Added support for multiple languages and the cable testing, rate limiting, and broadcast filtering features
202-10524-01	September 2009	First publication

Contents

Chapter 1 Get Started

What Is the ProSAFE Plus Configuration Utility?	6
Install the ProSAFE Plus Utility.	6
Access the ProSAFE Plus Utility and Your Switch	7

Chapter 2 Manage Network Settings

Specify IP Address Settings for the Switch	11
Manage Multicast Traffic With IGMP Snooping	12
Customize IGMP Snooping	12
Specify a VLAN for IGMP Snooping	13
Set Up Static Link Aggregation Groups	14

Chapter 3 Optimize Performance With Quality of Service

Enable 802.1p/DSCP-Based Quality of Service	18
Configure Port-Based Quality of Service	19
Set Up Rate Limiting	20
Set Up Broadcast Filtering	22

Chapter 4 Use VLANs for Traffic Segmentation

VLAN Overview	25
Create Basic Port-Based VLANs	25
Assign Ports to Multiple Port-Based VLANs	27
Create 802.1Q-Based VLANs in a Basic Configuration	28
Create 802.1Q-Based VLANs in an Advanced Configuration	30
Add Tagged or Untagged Ports to an 802.1Q-Based VLAN	31
Specify a Port PVID for an 802.1Q-Based VLAN	33

Chapter 5 Manage and Monitor the Switch

Manage Flow Control	36
Manage the Port Speed	37
Enable Loop Detection	38
Manage Power Saving Options	39
Change the Password	40
Upgrade the Firmware	41
Reboot the Switch	42
Save the Switch Configuration	42
Restore a Saved Switch Configuration	43

Restore Factory Default Settings	44
Enable Port Mirroring	45
View Switch Information	46
View the Port Statistics	47

Chapter 6 Diagnostics and Troubleshooting

Test Cable Connections	49
Resolve a Subnet Conflict to Access the Switch.....	50
Uninstall the ProSAFE Plus Utility	50

Get Started

1

The NETGEAR ProSAFE® Plus Configuration Utility runs on a Windows-based computer and lets you configure and manage ProSAFE Web Managed (Plus) Series Switches in your network.

This chapter covers the following topics:

- *What Is the ProSAFE Plus Configuration Utility?*
- *Install the ProSAFE Plus Utility*
- *Access the ProSAFE Plus Utility and Your Switch*

Note: For more information about the topics covered in this manual, visit the support website at netgear.com/support.

Note: New releases of the ProSAFE Plus Configuration Utility are made available from time to time at downloadcenter.netgear.com.

What Is the ProSAFE Plus Configuration Utility?

The ProSAFE Plus Configuration Utility, also referred to as the ProSAFE Plus Utility (or just the *utility*), lets you discover and configure ProSAFE Web Managed (Plus) Series Switches (visit netgear.com/business/products/switches/web-managed) on your network.

The utility runs on Windows-based computers. You can install the utility to customize and manage one or more switches for your network. The utility is located on the resource CD that comes with a switch. You can also visit netgear.com/support/product/PCU to download the latest version of the utility.

Instead of using the ProSAFE Plus Utility, you can also access and configure a ProSAFE Web Managed (Plus) Series Switch directly using a web browser and the switch's web browser-based management interface. For more information, see the *ProSAFE Gigabit Web Managed (Plus) Switches User Manual* or a user manual that is specific to your switch model. You can download manuals by visiting downloadcenter.netgear.com.

Some switches allow you to turn off the ability to manage them using the ProSAFE Plus Utility, only allowing them to be managed through the web browser-based management interface. If you do so, you can still use the ProSAFE Plus Utility to discover the switch in the network and determine its IP address, but you can only use the web browser-based management interface to configure and manage the switch. You can reenable the full capability of the ProSAFE Plus Utility from the web browser-based management interface.

Install the ProSAFE Plus Utility

You can install the ProSAFE Plus Utility on any computer that runs a Windows operating system (OS) and that is on the same network as the switches that you want to manage. If an earlier version of the utility is present on your computer, installing a newer version replaces the older version. Newer versions of the utility are backward compatible and support all previously released ProSAFE Web Managed (Plus) Series Switches.

Note: The ProSAFE Plus Utility requires Adobe Air. If you want to manage a model FS116E or model JFS524E switch, the ProSAFE Plus Utility also requires WinPcap. If Adobe Air and WinPcap are not detected during ProSAFE Plus Utility installation, you are prompted to allow them be installed.

➤ **To install the utility from the resource CD:**

1. Insert the resource CD into a computer that is connected to the switch.

The Resource CD page displays.

Note: If the Resource CD page does not display, your computer's Autorun feature might be disabled. Enable the Autorun feature or use the computer's file manager to navigate to the CD and double-click the utility's .exe file.

2. Click the **Install ProSAFE Plus Utility** link and follow the prompts to install the program.

If your computer runs a Windows 7 OS, the utility is installed in the Program Files folder of your computer and a **ProSAFE Plus Utility** icon is placed on your desktop.

If your computer runs a Windows 8 OS, Windows 8.1 OS, or Windows 10 OS, the utility is installed in the Program Files folder of your computer and a new tile is created.

If your computer runs a Windows 10 OS, the utility is installed in the Program Files folder of your computer, a **ProSAFE Plus Utility** icon is placed on your desktop, and a new tile is created.

3. If prompted, allow WinPcap and Adobe Air to be installed.
4. Reboot your computer after installing the ProSAFE Plus Utility.

Access the ProSAFE Plus Utility and Your Switch

For easiest access, we recommend that you cable the switch to a network with a router or DHCP server that assigns IP addresses, power on the switch, and then use the computer on which the ProSAFE Plus Utility is installed and that is connected to the same network as the switch.

The ProSAFE Plus Utility automatically discovers any ProSAFE Web Managed (Plus) switches in your network.


➤ **To configure the switch using the ProSAFE Plus Utility:**

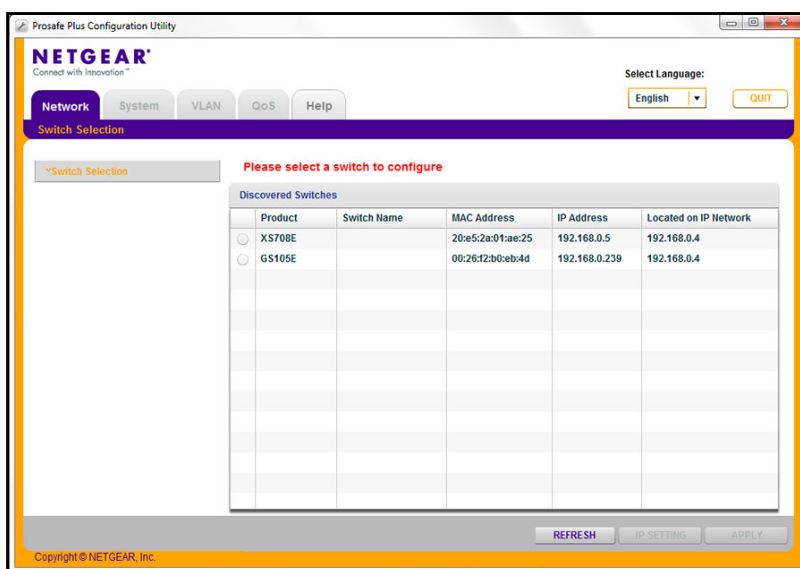
1. Cable the switch to a network with a router or DHCP server that manages IP address.
2. Power on the switch.

The DHCP server assigns the switch an IP address.

3. Connect your computer to the same network as the switch.

You can use a WiFi or wired connection. The computer and the switch must be on the same layer 2 network.

4. Launch the ProSAFE Plus Utility using the desktop icon  or tile.



The Switch Selection page displays a list of Web Managed (Plus) switches that the utility discovers on the local network.

If the ProSAFE Plus Utility is unable to discover the switches in your network, make sure that your computer's security software allows broadcast of UDP packets to go through UDP remote and source (local and destination) ports 63321 through 63324.

To allow this traffic, do one of the following:

- Create a rule in your computer's security software.
- Temporarily disable the firewall, Internet security, antivirus programs, or all of these programs.

5. To change the language, do the following:

- a. From the **Select Language** menu, select your language.

A pop-up window displays.

- b. Click the **Yes** button.

The utility relaunches.

6. Select the ProSAFE Web Managed (Plus) switch that you want to configure.

If you do not see the switch, click the **REFRESH** button.

If the switch is connected to the Internet and you log in to the switch for the first time, the Registration pop-up window displays. If this is not the first time that you log in, the Registration pop-up window might display, depending on the selection that you made in the Registration pop-up window during the previous session.

7. If the Registration pop-up window displays, select one of the following radio buttons:

- **Turn Off.** The Registration pop-up window closes and does not display again. However, if you restore the switch to factory default settings, the pop-up window displays again 24 hours after the restoration.

- **Remind Me Later.** The Registration pop-up window closes. After 24 hours, the Registration pop-up window might display again.
 - **Register Now.** If the switch is connected to the Internet connection, the NETGEAR website displays and you can register your product.
8. When prompted, enter the password.
The default password is **password**.
The Switch Information page displays.
 9. Use the utility to configure the switch settings.
Specific configuration procedures are described in this manual.
 10. If you temporarily disabled the firewall, Internet security, antivirus programs, or all of these programs, return them to their usual settings when you are finished with the configuration.

2. Manage Network Settings

2

This chapter covers the following topics:

- *Specify IP Address Settings for the Switch*
- *Manage Multicast Traffic With IGMP Snooping*
- *Set Up Static Link Aggregation Groups*

Specify IP Address Settings for the Switch

By default, the switch IP address works as follows:

- If you cable the switch to a network with a DHCP server before you power on the switch, the DHCP server assigns an IP address to the switch when the switch is powered on.
- If you power on the switch when it is not connected to a network with a DHCP server, the switch uses its default IP address, which is 192.168.0.239.

You can disable the DHCP mode in the switch and enter static IP address and subnet mask values for the switch as well as the address of the gateway device used by the switch.

➤ To specify IP address settings for a switch:

1. Connect your computer to the same network as the switch.

You can use a WiFi or wired network connection, or connect directly to a switch that is off-network using an Ethernet cable.

2. Launch the ProSAFE Plus Utility using the desktop icon or tile.

The Switch Selection page displays a list of Web Managed (Plus) switches that it discovers on the local network.

3. Select the switch.

If you do not see the switch, click the **REFRESH** button.

4. Click the **IP SETTING** button.

The screenshot shows the 'IP Setting' window. It contains the following information and controls:

- Product Name:** (empty field)
- Switch Name:** (empty field)
- MAC Address:** DC:EF:09:E1:AE:D7
- Firmware Version:** V1.0.0.2
- DHCP Mode:** A dropdown menu currently set to 'Enable'.
- Refresh:** An unchecked checkbox.
- IP Address:** 192.168.100.195
- Subnet Mask:** 255.255.255.0
- Gateway Address:** 192.168.100.1
- * Password:** (empty field)

Note: To navigate to this page, select **Network**, select the switch, and click the **IP SETTING** button.

5. In the **DHCP Mode** menu, select **Disable**.

The **IP Address**, **Subnet Mask**, and **Gateway Address** fields are enabled.

6. Enter the IP address, subnet mask, and if available, the gateway address.
7. Enter the switch's password in the **Password** field.

The switch's default password is **password**.

8. Click the **APPLY** button.

Your settings are saved.

Manage Multicast Traffic With IGMP Snooping

Internet Group Management Protocol (IGMP) snooping allows a switch to forward multicast traffic intelligently on the switch. Multicast IP traffic is traffic that is destined to a host group. Host groups are identified by class D IP addresses, which range from 224.0.0.0 to 239.255.255.255. Based on the IGMP query and report messages, the switch forwards traffic only to the ports that request the multicast traffic. This feature prevents the switch from broadcasting the traffic to all ports and possibly affecting network performance.

The switch maintains a map that shows which links need which IP multicast streams. The switch forwards multicast traffic only to the links that requested them and cuts multicast traffic from links that do not contain a multicast listener. Essentially, IGMP snooping helps optimize multicast performance at Layer 2 and is especially useful for bandwidth-intensive IP multicast applications such as IPTV.

Customize IGMP Snooping

By default, IGMP snooping is enabled. You can customize the settings for your network.

➤ To customize IGMP snooping:

1. Connect your computer to the same network as the switch.

You can use a WiFi or wired network connection, or connect directly to a switch that is off-network using an Ethernet cable.

2. Launch the ProSAFE Plus Utility using the desktop icon or tile.

The Switch Selection page displays a list of Web Managed (Plus) switches that it discovers on the local network.

3. Select the switch.

If you do not see the switch, click the **REFRESH** button.

4. Click the **APPLY** button.

You are asked to enter the password for the switch.

5. Enter the switch's password in the **password** field.

The switch's default password is **password**.

The Switch Status page displays.

6. Select **System > Multicast**.

7. Select the IGMP Snooping Status **Enable** radio button.
8. (Optional) Select the Validate IGMPv3 IP header **Enable** radio button.

Some network devices might not conform to the IGMPv3 standard. When the Validate IGMPv3 IP header option is enabled, IGMP messages are required to include TTL = 1, ToS Byte = 0xC0 (Internetwork Control), and the router alert IP option (9404) must be set. Otherwise, the packets are ignored.

9. (Optional) Select the Block Unknown MultiCast Address **Enable** radio button.

When this feature is enabled, multicast packets are forwarded only to the ports that are in the multicast group learned from IGMP snooping. All unknown multicast packets are dropped.

10. (Optional, for some models only) Select an option from the **IGMP Snooping Static Router Port** menu.

You can select a port to be the dedicated IGMP snooping static router port if no IGMP query exists in the network for the switch to discover the router port dynamically. After a port is selected as the static router port, all IGMP Join and Leave reports are forwarded to the port.

11. Click the **APPLY** button.

Your settings are saved.

Specify a VLAN for IGMP Snooping

You can specify a VLAN for IGMP snooping only if you enabled port-based or 802.1Q-based VLANs (see [Chapter 4, Use VLANs for Traffic Segmentation](#)).

➤ To specify a VLAN for IGMP snooping:

1. Connect your computer to the same network as the switch.

You can use a WiFi or wired network connection, or connect directly to a switch that is off-network using an Ethernet cable.

2. Launch the ProSAFE Plus Utility using the desktop icon or tile.

The Switch Selection page displays a list of Web Managed (Plus) switches that it discovers on the local network.

3. Select the switch.

If you do not see the switch, click the **REFRESH** button.

4. Click the **APPLY** button.

You are asked to enter the password for the switch.

5. Enter the switch's password in the **password** field.

The switch's default password is **password**.

The Switch Status page displays.

6. Select **System > Multicast**.

The previous figure is an example. Your switch might support more or less VLANs for IGMP snooping.

7. Make sure that the IGMP Snooping Status **Enable** radio button is selected.
8. In the **VLAN ID Enabled for IGMP Snooping** field, enter the ID of the VLAN.

By default, if you enable IGMP snooping, snooping occurs on VLAN 1. However, you can enable snooping on any VLAN:

- For port-based VLANs, you can enter a VLAN ID from 1 to the maximum number that your switch supports (5, 8, 16, or 24).
- For 802.1Q-based VLANs, you can enter a VLAN ID from 1 to 4094.

9. Click the **APPLY** button.

Your settings are saved.

Set Up Static Link Aggregation Groups

Link aggregation groups (LAGs) allow you to combine multiple Ethernet links into a single logical link. Network devices treat the aggregation as if it were a single link, which increases fault tolerance and load sharing. The number of LAGs that the switch supports depends on the model. Configure LAG membership before you enable the LAG.

Note: Static link aggregation (port trunking) is supported on the following models:

- GSS116E (all)
- GS116E (v2 or newer)
- JGS516PE (all)
- JGS524Ev1 (v1.00.15 or newer)
- JGS524Ev2 (all)
- JGS524PE (all)
- XS708E (all)
- XS716E (all)

Note: The switch does not support IEEE 802.3ad Link Aggregation or Link Aggregation Control Protocol (LACP) groups. The switch supports manual static LAGs only.

You must set up LAG membership before you can enable LAGs.

➤ **To specify LAG membership and enable a LAG:**

1. Connect your computer to the same network as the switch.
You can use a WiFi or wired network connection, or connect directly to a switch that is off-network using an Ethernet cable.
2. Launch the ProSAFE Plus Utility using the desktop icon or tile.
The Switch Selection page displays a list of Web Managed (Plus) switches that it discovers on the local network.
3. Select the switch.
If you do not see the switch, click the **REFRESH** button.
4. Click the **APPLY** button.
You are asked to enter the password for the switch.
5. Enter the switch's password in the **password** field.
The switch's default password is **password**.
The Switch Status page displays.
6. Select **System > LAG > LAG Membership**.

Port	01	02	03	04	05	06	07	08	09	10	11	12	13	14	15	16
	<input type="checkbox"/>	<input type="checkbox"/>	<input type="checkbox"/>	<input type="checkbox"/>	<input type="checkbox"/>	<input type="checkbox"/>	<input type="checkbox"/>	<input type="checkbox"/>	<input type="checkbox"/>	<input type="checkbox"/>	<input type="checkbox"/>	<input type="checkbox"/>	<input type="checkbox"/>	<input type="checkbox"/>	<input type="checkbox"/>	<input type="checkbox"/>

The previous figure is an example. Your switch might provide a larger number of ports.

7. In the **LAG ID** menu, select the LAG ID.

The number of LAGs that the switch supports depends on the model.

8. Select the ports for the LAG by selecting the associated check boxes under the port numbers.

A LAG consists of at least two ports.

9. Click the **APPLY** button.

Your settings are saved.

10. Select **System > LAG**.

<input type="checkbox"/>	LAG ID	Admin Mode	Port Members
<input type="checkbox"/>	1	Disable	1,2
<input type="checkbox"/>	2	Disable	4,5
<input type="checkbox"/>	3	Disable	
<input type="checkbox"/>	4	Disable	

Admin Mode Disable

11. Select the ID of the LAG for which you just set up the port membership.

12. In the **Admin Mode** menu, select **Enable**.

13. Click the **APPLY** button.

Your settings are saved.

3. Optimize Performance With Quality of Service

This chapter covers the following topics:

- *Enable 802.1p/DSCP-Based Quality of Service*
- *Configure Port-Based Quality of Service*
- *Set Up Rate Limiting*
- *Set Up Broadcast Filtering*

Enable 802.1p/DSCP-Based Quality of Service

802.1p/DSCP-based priority uses a field in the data packet header that identifies the class of data in the packet (for example, voice or video). When 802.1p/DSCP-based priority is used, the switch reads information in the packet header to determine the priority to assign to the packet. The switch reads both 802.1p tag information and DSCP/ToS tag information. If an ingress packet contains both an 802.1p tag and a DSCP/ToS tag, the switch gives precedence to the 802.1p tag.

All ports on the switch check the packet header and transmit the packet with a priority determined by the packet content.

This feature is enabled by default.

➤ To enable 802.1p/DSCP-based QoS:

1. Connect your computer to the same network as the switch.

You can use a WiFi or wired connection.

2. Launch the ProSAFE Plus Utility using the desktop icon or tile.

The Switch Selection page displays a list of Web Managed (Plus) switches that it discovers on the local network.

3. Select the switch.

If you do not see the switch, click the **REFRESH** button.

4. Click the **APPLY** button.

You are asked to enter the password for the switch.

5. Enter the switch's password in the **password** field.

The switch's default password is **password**.

The Switch Status page displays.

6. Select **QoS**.

The Quality of Service page displays.

7. Select the **802.1p/DSCP Based** radio button.

A pop-up window opens, informing you that the current QoS settings will be lost.

8. Click the **Yes** button.

The pop-up window closes.

9. Click the **APPLY** button.

Your settings are saved. Data is now processed based on 802.1p priority tags in the data.

Configure Port-Based Quality of Service

You can assign a priority to all data passing through a particular port. Data with a higher priority is transmitted faster. If packets arrive at several ports at the same time, the ports configured as higher priority transmit their packets first. You must determine which ports will carry delay-sensitive data.

➤ **To configure port-based QoS:**

1. Connect your computer to the same network as the switch.
You can use a WiFi or wired network connection, or connect directly to a switch that is off-network using an Ethernet cable.
2. Launch the ProSAFE Plus Utility using the desktop icon or tile.
The Switch Selection page displays a list of Web Managed (Plus) switches that it discovers on the local network.
3. Select the switch.
If you do not see the switch, click the **REFRESH** button.
4. Click the **APPLY** button.
You are asked to enter the password for the switch.
5. Enter the switch's password in the **password** field.
The switch's default password is **password**.
The Switch Status page displays.
6. Select **QoS**.
The Quality of Service page displays.
7. If this is the first time that you are setting up port-based QoS, select the **Port Based** radio button and continue with [Step 8](#).
Otherwise, see [Step 9](#).
A pop-up window opens, informing you that the current QoS settings will be lost.
8. Click the **Yes** button.
The pop-up window closes and the port priority options display.

QoS Global Configuration

Quality of Service

QoS Mode ☒ Port Based ☐ 802.1p/DSCP Based

Port Priority

<input type="checkbox"/>	Port	Priority
<input type="checkbox"/>	01	Low Priority(p0)
<input type="checkbox"/>	02	Low Priority(p0)
<input type="checkbox"/>	03	Low Priority(p0)
<input type="checkbox"/>	04	Low Priority(p0)
<input type="checkbox"/>	05	Low Priority(p0)
<input type="checkbox"/>	06	Low Priority(p0)
<input type="checkbox"/>	07	Low Priority(p0)
<input type="checkbox"/>	08	Low Priority(p0)

p0 Lowest Priority Highest p7

Low Priority (Background data) Normal Priority (Business-critical data, email, internet, etc.) Medium Priority (Stream multimedia, etc.) High Priority (Interactive voice, video, and delay sensitive data)

The previous figure is an example. Your switch might provide more or less ports. The **802.1p/DSCP-based** radio button is not supported on all models and therefore might not show on the page.

9. To set the port priority for one or more ports, do the following:
 - a. Select one or more ports.
 - b. In the Priority section, select the priority by moving the slider.
 - c. Click the **APPLY** button.

Your settings are saved. The same priority is applied to all ports that you selected.

10. To set a different port priority for one or more other ports, repeat [Step 9](#).

Set Up Rate Limiting

You can limit the rate at which the switch accepts incoming data and the rate that it retransmits outgoing data. The rate choices vary depending on the switch model.

Rate limiting can be set for a port in addition to other QoS settings. If the port rate limit is set, the switch restricts the acceptance or retransmission of data to the values configured.

➤ To set up rate limiting:

1. Connect your computer to the same network as the switch.

You can use a WiFi or wired network connection, or connect directly to a switch that is off-network using an Ethernet cable.

2. Launch the ProSAFE Plus Utility using the desktop icon or tile.

The Switch Selection page displays a list of Web Managed (Plus) switches that it discovers on the local network.

3. Select the switch.

If you do not see the switch, click the **REFRESH** button.

4. Click the **APPLY** button.

You are asked to enter the password for the switch.

5. Enter the switch's password in the **password** field.

The switch's default password is **password**.

The Switch Status page displays.

6. Select **QoS > Rate Limit**.

Rate Limit			
Rate Control Setting			
<input type="checkbox"/>	Port	Ingress Rate	Egress Rate
<input type="checkbox"/>	01	No Limit	No Limit
<input type="checkbox"/>	02	No Limit	No Limit
<input type="checkbox"/>	03	No Limit	No Limit
<input type="checkbox"/>	04	No Limit	No Limit
<input type="checkbox"/>	05	No Limit	No Limit
<input type="checkbox"/>	06	No Limit	No Limit
<input type="checkbox"/>	07	No Limit	No Limit
<input type="checkbox"/>	08	No Limit	No Limit
<div style="display: flex; justify-content: flex-end; gap: 10px;"> <div>Ingress Rate No Limit</div> <div>Egress Rate No Limit</div> </div>			

The previous figure is an example. Your switch might provide more or less ports.

7. Select one or more ports.
8. Set the ingress (incoming) and egress (outgoing) traffic rates by doing the following:

- a. Select one or more ports.
- b. In the **Ingress Rate** menu, select the maximum rate.

The rate that you can set depends on the switch model. By default, no limit is set.

- c. In the **Egress Rate** menu, select the maximum rate.

The rate that you can set depends on the switch model. By default, no limit is set.

- d. Click the **APPLY** button.

Your settings are saved.

9. To set different rates for one or more other ports, repeat [Step 8](#).

Set Up Broadcast Filtering

You can configure the switch to block broadcast storms (massive transmission of broadcast packets forwarded to every port on the same VLAN). If they are not blocked, broadcast storm packets can delay or halt the transmission of other data. Some switches allow you to select a storm control rate for each port. Others assign a predetermined storm control rate for all ports on the switch.

If broadcast traffic on any port exceeds the threshold that you set, the switch temporarily blocks (discards) the broadcast traffic.

➤ **To set up broadcast filtering:**

1. Connect your computer to the same network as the switch.

You can use a WiFi or wired network connection, or connect directly to a switch that is off-network using an Ethernet cable.

2. Launch the ProSAFE Plus Utility using the desktop icon or tile.

The Switch Selection page displays a list of Web Managed (Plus) switches that it discovers on the local network.

3. Select the switch.

If you do not see the switch, click the **REFRESH** button.

4. Click the **APPLY** button.

You are asked to enter the password for the switch.

5. Enter the switch's password in the **password** field.

The switch's default password is **password**.

The Switch Status page displays.

6. Select **QoS > Broadcast Filtering**.

The Broadcast Filtering page displays.

7. If this is the first time that you are setting up broadcast filtering, select the **Enable** radio button and continue with [Step 8](#).

Otherwise, see [Step 9](#).

8. Click the **Apply** button.

Your settings are saved and the Storm control rate table displays.

Broadcast Filtering

Broadcast Filtering ☐ Disable ☒ Enable

Storm control rate

<input type="checkbox"/>	Port	Storm control rate
<input type="checkbox"/>	01	No Limit
<input type="checkbox"/>	02	No Limit
<input type="checkbox"/>	03	No Limit
<input type="checkbox"/>	04	No Limit
<input type="checkbox"/>	05	No Limit
<input type="checkbox"/>	06	No Limit
<input type="checkbox"/>	07	No Limit
<input type="checkbox"/>	08	No Limit

Storm control rate

The previous figure is an example. Your switch might provide more or less ports.

9. Set the storm control rate by doing the following:
 - a. Select one or more ports.
 - b. In the **Storm control rate** menu, select the maximum rate.
You can set a rate from 512 Kbps to 512 Mbps. By default, no limit is set.
 - c. Click the **APPLY** button.
Your settings are saved.
10. To set a different rate for one or more other ports, repeat [Step 9](#).

4. Use VLANs for Traffic Segmentation

This chapter covers the following topics:

- *VLAN Overview*
- *Create Basic Port-Based VLANs*
- *Assign Ports to Multiple Port-Based VLANs*
- *Create 802.1Q-Based VLANs in a Basic Configuration*
- *Create 802.1Q-Based VLANs in an Advanced Configuration*
- *Add Tagged or Untagged Ports to an 802.1Q-Based VLAN*
- *Specify a Port PVID for an 802.1Q-Based VLAN*

VLAN Overview

Virtual LANs (VLANs) are made up of networked devices that are grouped logically into separate networks. You can group ports on a switch to create a virtual network made up of the devices connected to the ports.

Ports can be grouped in VLANs using port-based or 802.1Q criteria:

- **Port-based VLANs.** Assign ports to virtual networks. Ports with the same VLAN ID are placed in the same VLAN. This feature provides an easy way to partition a network into private subnetworks.
- **802.1Q VLANs.** Create virtual networks using the IEEE 802.1Q standard. 802.1Q uses a VLAN tagging system to determine which VLAN an Ethernet frame belongs to. You can configure ports to be a part of a VLAN. When a port receives data tagged for a VLAN, the data is discarded unless the port is a member of that VLAN. This technique is useful for communicating with devices outside of your local network as well as receiving data from other ports that are not in the VLAN. However, for you to be able to use an 802.1Q VLAN, you must know the VLAN ID.

Create Basic Port-Based VLANs

A port-based VLAN configuration lets you assign ports on the switch to a VLAN. The number of VLANs is limited to the number of ports on the switch. In a basic port-based VLAN configuration, ports with the same VLAN ID are placed into the same VLAN.

You can also assign ports to multiple VLANs (see [Assign Ports to Multiple Port-Based VLANs](#) on page 27).

By default, all ports are members of VLAN 1.

➤ To create basic port-based VLANs:

1. Connect your computer to the same network as the switch.
You can use a WiFi or wired network connection, or connect directly to a switch that is off-network using an Ethernet cable.
2. Launch the ProSAFE Plus Utility using the desktop icon or tile.
The Switch Selection page displays a list of Web Managed (Plus) switches that it discovers on the local network.
3. Select the switch.
If you do not see the switch, click the **REFRESH** button.
4. Click the **APPLY** button.
You are asked to enter the password for the switch.
5. Enter the switch's password in the **password** field.
The switch's default password is **password**.

The Switch Status page displays.

6. Select VLAN.

The Basic Port-Based VLAN page displays.

7. If this is the first time that you are accessing the Basic Port-based VLAN Status page or if you are changing the VLAN assignment method, select the **Enable** radio button and continue with *Step 8*.

Otherwise, see *Step 9*.

A pop-up window opens, informing you that the current VLAN settings will be lost.

8. Click the Yes button.

The pop-up window closes and the Basic Port-based VLAN Group table displays.

Basic Port-based VLAN Configuration								
Basic Port-based VLAN Status								
Basic Port-based VLAN <input type="radio"/> Disable <input checked="" type="radio"/> Enable								
Basic Port-based VLAN Group (1-8 or all)								
port	01	02	03	04	05	06	07	08
VLAN Group	1	1	1	1	1	1	1	1

The previous figure is an example. Your switch might provide more or less ports.

9. Under each port to be added to a VLAN, enter the VLAN ID of the VLAN.

You can enter a VLAN ID from 1 to the maximum number of ports that your switch supports. If all the VLANs share an uplink to the Internet or servers, enter **all** in the **VLAN ID** field for the port that you want to use for the uplink.

Note: If ports are members of the same LAG, you must assign them to the same VLAN.

10. Click the APPLY button.

Your settings are saved.

Assign Ports to Multiple Port-Based VLANs

A port-based VLAN configuration lets you assign ports on the switch to a VLAN. The number of VLANs is limited to the number of ports on the switch. In an advanced port-based VLAN configuration, you can assign a single port to multiple VLANs.

By default, all ports are members of VLAN 1.

➤ To assign ports to multiple port-based VLANs:

1. Connect your computer to the same network as the switch.
You can use a WiFi or wired network connection, or connect directly to a switch that is off-network using an Ethernet cable.
2. Launch the ProSAFE Plus Utility using the desktop icon or tile.
The Switch Selection page displays a list of Web Managed (Plus) switches that it discovers on the local network.
3. Select the switch.
If you do not see the switch, click the **REFRESH** button.
4. Click the **APPLY** button.
You are asked to enter the password for the switch.
5. Enter the switch's password in the **password** field.
The switch's default password is **password**.
The Switch Status page displays.
6. Select **VLAN > Port Based > Advanced**.
The Advanced Port-Based VLAN page displays.
7. If this is the first time that you are accessing the Advanced Port-based VLAN Status page or if you are changing the VLAN assignment method, select the **Enable** radio button and continue with [Step 8](#).
Otherwise, see [Step 9](#).
A pop-up window opens, informing you that the current VLAN settings will be lost.
8. Click the **Yes** button.
The pop-up window closes and the VLAN Configuration and VLAN Membership sections display.

Advanced Port-based VLAN Configuration								
Advanced Port-based VLAN Status								
Advanced Port-based VLAN <input type="radio"/> Disable <input checked="" type="radio"/> Enable								
VLAN Configuration								
VLAN Configuration								
VLAN Identifier		01		Group Operation		Select All		
Port	01	02	03	04	05	06	07	08
	<input checked="" type="checkbox"/>	<input checked="" type="checkbox"/>	<input checked="" type="checkbox"/>	<input checked="" type="checkbox"/>	<input checked="" type="checkbox"/>	<input checked="" type="checkbox"/>	<input checked="" type="checkbox"/>	<input checked="" type="checkbox"/>
VLAN Membership								
VLAN ID	Port Members							
01	01 02 03 04 05 06 07 08							

The previous figure is an example. Your switch might provide more or less ports.

9. In the **VLAN identifier** menu, select the VLAN.
10. Select the ports that you want to add to the VLAN by doing the following:
 - a. (Optional) In the **Group Operation** menu, select either **Select All** or **Remove All**. All ports are either added to the VLAN or removed from the VLAN.
 - b. Select or remove individual ports by selecting the check box under the port numbers.

Note: If ports are members of the same LAG, you must assign them to the same VLAN.

- c. Click the **APPLY** button.

Your settings are saved. In the VLAN Membership table, the ports display as members of the VLAN.

11. To select ports for another VLAN, repeat [Step 9](#) and [Step 10](#).

Create 802.1Q-Based VLANs in a Basic Configuration

A 802.1Q-based VLAN configuration lets you assign ports on the switch to a VLAN with an ID number in the range of 1–4093. By default, all ports are members of VLAN 1.

In an advanced 802.1Q-based VLAN configuration, you can set up VLANs to which you can add tagged or untagged ports and you can use port VLAN ID (PVID). For more information, [Create 802.1Q-Based VLANs in an Advanced Configuration](#) on page 30.

➤ To create 802.1Q-based VLANs in a basic configuration:

1. Connect your computer to the same network as the switch.

You can use a WiFi or wired network connection, or connect directly to a switch that is off-network using an Ethernet cable.

2. Launch the ProSAFE Plus Utility using the desktop icon or tile.

The Switch Selection page displays a list of Web Managed (Plus) switches that it discovers on the local network.

3. Select the switch.

If you do not see the switch, click the **REFRESH** button.

4. Click the **APPLY** button.

You are asked to enter the password for the switch.

5. Enter the switch's password in the **password** field.

The switch's default password is **password**.

The Switch Status page displays.

6. Select **VLAN > 802.1Q**.

The Basic 802.1Q VLAN page displays.

7. If this is the first time that you are accessing the Basic 802.1Q VLAN Status page or if you are changing the VLAN assignment method, select the **Enable** radio button and continue with [Step 8](#).

Otherwise, see [Step 9](#).

A pop-up window opens, informing you that the current VLAN settings will be lost.

8. Click the **Yes** button.

The pop-up window closes and the Basic 802.1Q VLAN Identifier table displays.

Basic 802.1Q VLAN Configuration								
Basic 802.1Q VLAN Status								
Basic 802.1Q VLAN <input type="radio"/> Disable <input checked="" type="radio"/> Enable								
Basic 802.1Q VLAN Identifier (1-4093 or all)								
port	01	02	03	04	05	06	07	08
VLAN ID	1	1	1	1	1	1	1	1

The previous figure is an example. Your switch might provide more or less ports.

9. Under each port to be added to a VLAN, enter the VLAN ID of the VLAN.

You can enter a VLAN ID from 1 to 4093. If all the VLANs share an uplink to the Internet or servers, enter **all** in the **VLAN ID** field for the port that you want to use for the uplink.

Note: If ports are members of the same LAG, you must assign them to the same VLAN.

10. Click the **APPLY** button.

Your settings are saved.

Create 802.1Q-Based VLANs in an Advanced Configuration

In an advanced 802.1Q-based VLAN configuration, you can assign ports on the switch to a VLAN with an ID number in the range of 1–4093 and you can add tagged or untagged ports to a VLAN. In addition, you can use port VLAN IDs (PVIDs). By default, all ports are untagged members of VLAN 1.

➤ **To create 802.1Q-based VLANs in an advanced configuration:**

1. Connect your computer to the same network as the switch.
You can use a WiFi or wired network connection, or connect directly to a switch that is off-network using an Ethernet cable.
2. Launch the ProSAFE Plus Utility using the desktop icon or tile.
The Switch Selection page displays a list of Web Managed (Plus) switches that it discovers on the local network.
3. Select the switch.
If you do not see the switch, click the **REFRESH** button.
4. Click the **APPLY** button.
You are asked to enter the password for the switch.
5. Enter the switch's password in the **password** field.
The switch's default password is **password**.
The Switch Status page displays.
6. Select **VLAN > 802.1Q > Advanced**.
The Advanced 802.1Q VLAN Status page displays.
7. If this is the first time that you are accessing the Advanced 802.1Q VLAN Status page or if you are changing the VLAN assignment method, select the **Enable** radio button and continue with [Step 8](#).
Otherwise, see [Step 9](#).
A pop-up window opens, informing you that the current VLAN settings will be lost.
8. Click the **Yes** button.
The pop-up window closes and the VLAN Identifier Setting table displays.

Advanced 802.1Q VLAN Configuration

Advanced 802.1Q VLAN Status

Advanced 802.1Q VLAN ☐ Disable ☒ Enable

VLAN Identifier Setting

<input type="checkbox"/>	VLAN ID	Port Members
<input type="checkbox"/>	01	01 02 03 04 05 06 07 08
<input type="checkbox"/>		
<input type="checkbox"/>		
<input type="checkbox"/>		
<input type="checkbox"/>		
<input type="checkbox"/>		
<input type="checkbox"/>		
<input type="checkbox"/>		
<input type="checkbox"/>		
<input type="checkbox"/>		

VLAN ID

The previous figure is an example. Your switch might provide more or less ports, all of which are members of VLAN 1 by default.

9. In the **VLAN ID** field, enter a VLAN ID.

You can enter a VLAN ID from 1 to 4093.

10. Click the **ADD** button.

The new VLAN is added to the VLAN Identifier Setting table.

After you create a new VLAN ID, use the VLAN membership option to add ports to the VLAN. (Select **VLAN > 802.1Q > Advanced > VLAN Membership**. See also [Add Tagged or Untagged Ports to an 802.1Q-Based VLAN](#) on page 31.)

Note: To delete a VLAN, select the check box for the VLAN and click the **Delete** button.

Add Tagged or Untagged Ports to an 802.1Q-Based VLAN

After you define a VLAN ID using the advanced 802.1Q VLAN option (see [Create 802.1Q-Based VLANs in an Advanced Configuration](#) on page 30), you must add ports to the VLAN.

While you add ports to a VLAN, you can specify whether the ports must be tagged or untagged. Port tagging allows a port to be associated with a particular VLAN and allows the VLAN ID tag to be added to data packets that are sent through the port. The tag identifies the VLAN that must receive the data.

By default, all ports are untagged.

- **To add tagged or untagged ports to an 802.1Q-based VLAN:**

1. Connect your computer to the same network as the switch.

You can use a WiFi or wired network connection, or connect directly to a switch that is off-network using an Ethernet cable.

2. Launch the ProSAFE Plus Utility using the desktop icon or tile.

The Switch Selection page displays a list of Web Managed (Plus) switches that it discovers on the local network.

3. Select the switch.

If you do not see the switch, click the **REFRESH** button.

4. Click the **APPLY** button.

You are asked to enter the password for the switch.

5. Enter the switch's password in the **password** field.

The switch's default password is **password**.

The Switch Status page displays.

6. Select **VLAN > 802.1Q > Advanced > VLAN Membership**.

You can select **VLAN Membership** only if you already enabled the advanced 802.1Q VLAN option (see [Create 802.1Q-Based VLANs in an Advanced Configuration](#) on page 30).

Port	01	02	03	04	05	06	07	08
	U	U	U	U	U	U	U	U

The previous figure is an example. Your switch might provide more or less ports.

7. In the **VLAN Identifier** menu, select the VLAN.
8. Select the ports that you want to add to the VLAN by doing the following:
 - a. (Optional) In the **Group Operation** menu, select **Untag All**, **Tag all**, or **Remove all**.

All ports are either added to the VLAN (tagged or untagged) or removed from the VLAN.

- b. Select individual ports and assign them as tagged (T) or untagged (U) ports or remove individual ports by selecting the check box under the port numbers.

By default, all ports are untagged.

- c. Click the **APPLY** button.

Your settings are saved. In the VLAN Membership table, the ports display as members of the VLAN.

9. To select ports for another VLAN, repeat [Step 7](#) and [Step 8](#).
10. To verify your selections, select **VLAN > 802.1Q > Advanced > VLAN Configuration**.

The Advanced 802.1Q VLAN Status page displays. In the VLAN Identifier Setting table, the ports display next to the VLAN or VLANS to which they were added.

Specify a Port PVID for an 802.1Q-Based VLAN

A default port VLAN ID (PVID) is a VLAN ID tag that the switch assigns to data packets it receives that are not already addressed (tagged) for a particular VLAN. If you connected a computer on port 6 and you want it to be a part of VLAN 2, configure port 6 to automatically add a PVID of 2 to all data received from the computer. This step ensures that the data from the computer on port 6 can be seen only by other members of VLAN 2. You can assign only one PVID to a port.

➤ **To assign a PVID to one or more ports:**

1. Connect your computer to the same network as the switch.

You can use a WiFi or wired network connection, or connect directly to a switch that is off-network using an Ethernet cable.

2. Launch the ProSAFE Plus Utility using the desktop icon or tile.

The Switch Selection page displays a list of Web Managed (Plus) switches that it discovers on the local network.

3. Select the switch.

If you do not see the switch, click the **REFRESH** button.

4. Click the **APPLY** button.

You are asked to enter the password for the switch.

5. Enter the switch's password in the **password** field.

The switch's default password is **password**.

The Switch Status page displays.

6. Select **VLAN > 802.1Q > Advanced > PVID**.

You can select **Port PVID** only if you already enabled the advanced 802.1Q VLAN option (see [Create 802.1Q-Based VLANs in an Advanced Configuration](#) on page 30).

The screenshot shows the 'Port PVID Configuration' utility. It features a table with two columns: 'Port' and 'PVID'. The 'Port' column lists ports 01 through 08, each with a checkbox to its left. The 'PVID' column shows the value '1' for each port. Below the table is a purple bar containing a 'PVID' label and a text input field.

<input type="checkbox"/>	Port	PVID
<input type="checkbox"/>	01	1
<input type="checkbox"/>	02	1
<input type="checkbox"/>	03	1
<input type="checkbox"/>	04	1
<input type="checkbox"/>	05	1
<input type="checkbox"/>	06	1
<input type="checkbox"/>	07	1
<input type="checkbox"/>	08	1

PVID

The previous figure is an example. Your switch might provide more or less ports.

7. Select one or more ports.
8. Enter the PVID.

You can enter a PVID only for a VLAN that already exists.

IMPORTANT:

Do not remove all ports from PVID 1, which is the management PVID. If you remove all ports from PVID 1, you cannot access the switch for management. In such a situation, to recover access to the switch, you must reset the switch to factory defaults settings.

9. Click the **APPLY** button.

Your settings are saved.

5. Manage and Monitor the Switch

This chapter covers the following topics:

- *Manage Flow Control*
- *Manage the Port Speed*
- *Enable Loop Detection*
- *Manage Power Saving Options*
- *Change the Password*
- *Upgrade the Firmware*
- *Reboot the Switch*
- *Save the Switch Configuration*
- *Restore a Saved Switch Configuration*
- *Restore Factory Default Settings*
- *Enable Port Mirroring*
- *View Switch Information*
- *View the Port Statistics*

Manage Flow Control

Flow control works by pausing a port if the port becomes oversubscribed and dropping all traffic for small bursts of time during the congestion condition. You can enable or disable IEEE 802.3x flow control. By default, flow control is disabled.

➤ **To manage flow control:**

1. Connect your computer to the same network as the switch.

You can use a WiFi or wired network connection, or connect directly to a switch that is off-network using an Ethernet cable.

2. Launch the ProSAFE Plus Utility using the desktop icon or tile.

The Switch Selection page displays a list of Web Managed (Plus) switches that it discovers on the local network.

3. Select the switch.

If you do not see the switch, click the **REFRESH** button.

4. Click the **APPLY** button.

You are asked to enter the password for the switch.

5. Enter the switch's password in the **password** field.

The switch's default password is **password**.

Selected Switch					
	Product	Switch Name	MAC Address	IP Address	Located on IP Network
⊕	XS708Ev2		dc:ef:09:e1:ae:d7	192.168.100.195	192.168.100.122
Port Status					
Port	Port Status	Speed	Linked Speed	Flow Control	
01	Up	Auto ▼	100M	Disable	▼
02	Down	Auto ▼	No Speed	Disable	▼
03	Down	Auto ▼	No Speed	Disable	▼
04	Down	Auto ▼	No Speed	Disable	▼
05	Down	Auto ▼	No Speed	Disable	▼
06	Down	Auto ▼	No Speed	Disable	▼
07	Down	Auto ▼	No Speed	Disable	▼
08	Down	Auto ▼	No Speed	Disable	▼

The previous figure is an example. Your switch might provide more or less ports.

Note: To navigate to this page, select **System > Status > Switch Status**.

6. For each port that you want to configure, in the **Flow Control** menu, select **Enable** or **Disable**.

By default, flow control is disabled.

7. Click the **APPLY** button.

Your settings are saved.

Manage the Port Speed

By default, the port speed on all ports is set automatically after the switch determines the speed using auto-negotiation with the link partner. You can select a specific port speed setting for each port, or disable a port by shutting it down manually.

➤ To specify the port speed or shut down a port:

1. Connect your computer to the same network as the switch.

You can use a WiFi or wired network connection, or connect directly to a switch that is off-network using an Ethernet cable.

2. Launch the ProSAFE Plus Utility using the desktop icon or tile.

The Switch Selection page displays a list of Web Managed (Plus) switches that it discovers on the local network.

3. Select the switch.

If you do not see the switch, click the **REFRESH** button.

4. Click the **APPLY** button.

You are asked to enter the password for the switch.

5. Enter the switch's password in the **password** field.

The switch's default password is **password**.

Selected Switch					
	Product	Switch Name	MAC Address	IP Address	Located on IP Network
⊙	XS708Ev2		dc:ef:09:e1:ae:d7	192.168.100.195	192.168.100.122
Port Status					
Port	Port Status	Speed	Linked Speed	Flow Control	
01	Up	Auto ▼	100M	Disable	▼
02	Down	Auto ▼	No Speed	Disable	▼
03	Down	Auto ▼	No Speed	Disable	▼
04	Down	Auto ▼	No Speed	Disable	▼
05	Down	Auto ▼	No Speed	Disable	▼
06	Down	Auto ▼	No Speed	Disable	▼
07	Down	Auto ▼	No Speed	Disable	▼
08	Down	Auto ▼	No Speed	Disable	▼

The previous figure is an example. Your switch might provide more or less ports.

Note: To navigate to this page, select **System > Status > Switch Status**.

6. For each port that you want to configure, in the **Speed** menu, select one of the following options:
 - **Auto**. The port speed is set automatically after the switch determines the speed using auto-negotiation with the link partner. This is the default setting.
 - **Disable**. The port is shut down.
 - A specific speed and duplex mode, which depends on the switch model. If you select a specific speed and duplex mode, the port is forced to function at that speed and duplex mode. Ports that function at 1000M always function in full duplex mode.
 7. Click the **APPLY** button.
- Your settings are saved.

Enable Loop Detection

If loop detection is enabled and the switch detects a loop, both LEDs of a port blink at a constant speed.

➤ To enable loop detection:

1. Connect your computer to the same network as the switch.
You can use a WiFi or wired network connection, or connect directly to a switch that is off-network using an Ethernet cable.
2. Launch the ProSAFE Plus Utility using the desktop icon or tile.
The Switch Selection page displays a list of Web Managed (Plus) switches that it discovers on the local network.
3. Select the switch.
If you do not see the switch, click the **REFRESH** button.
4. Click the **APPLY** button.
You are asked to enter the password for the switch.
5. Enter the switch's password in the **password** field.
The switch's default password is **password**.
The Switch Status page displays.
6. Select **System > Management > Loop Detection**.
The Loop Detection page displays.
7. Select the **Enable** radio button.
8. Click the **APPLY** button.
Your settings are saved.

Manage Power Saving Options

Depending on the power saving options that your switch model provides, you can manage the IEEE 802.3az Energy Efficient Ethernet (EEE) function, cable length power saving, or link-up and link-down power saving, or a combination of these features:

- **Short Cable Power Saving.** Dynamically detects and adjusts power that is required for the detected cable length.
- **Link-Down Power Saving.** Reduces the power consumption considerably when the network cable is disconnected. When the network cable is reconnected, the switch detects an incoming signal and restores normal power.
- **EEE.** Combines the Energy Efficient Ethernet (EEE) 802.3 MAC sublayer with the 100BASE-TX and 1000BASE-T physical layers to support operation in Low Power Idle (LPI) mode. When LPI mode is enabled, systems on both sides of the link can disable portions of their functionality and save power during periods of low link utilization.

➤ To enable the power saving options:

1. Connect your computer to the same network as the switch.

You can use a WiFi or wired network connection, or connect directly to a switch that is off-network using an Ethernet cable.

2. Launch the ProSAFE Plus Utility using the desktop icon or tile.

The Switch Selection page displays a list of Web Managed (Plus) switches that it discovers on the local network.

3. Select the switch.

If you do not see the switch, click the **REFRESH** button.

4. Click the **APPLY** button.

You are asked to enter the password for the switch.

5. Enter the switch's password in the **password** field.

The switch's default password is **password**.

The Switch Status page displays.

6. Select **System > Management > Power Saving Mode**.



Power Saving Mode	
Power Saving Mode	
Power Saving Mode	<input checked="" type="radio"/> Disable <input type="radio"/> Enable

The previous figure is an example. Your switch might provide other options.

7. Select the **Enable** radio button.

By default, the **Disable** radio button is selected.

8. Click the **APPLY** button.

Your settings are saved.

Change the Password

The default password to access the switch is **password**. We recommend that you change this password to a more secure password. The ideal password contains no dictionary words from any language and contains uppercase and lowercase letters, numbers, and symbols. It can be up to 20 characters.

➤ To change the password:

1. Connect your computer to the same network as the switch.

You can use a WiFi or wired network connection, or connect directly to a switch that is off-network using an Ethernet cable.

2. Launch the ProSAFE Plus Utility using the desktop icon or tile.

The Switch Selection page displays a list of Web Managed (Plus) switches that it discovers on the local network.

3. Select the switch.

If you do not see the switch, click the **REFRESH** button.

4. Click the **APPLY** button.

You are asked to enter the password for the switch.

5. Enter the switch's password in the **password** field.

The switch's default password is **password**.

The Switch Status page displays.

6. Select **System > Maintenance > Change Password**.

The Change Password page displays.

7. In the **Old Password** field, type the current password for the switch.

8. Type the new password in the **New Password** field and in the **Re-type New Password** field.

9. Click the **APPLY** button.

Your settings are saved. Keep the new password in a secure location so that you can access the switch in the future.

Upgrade the Firmware

You can check for the latest firmware version for your switch by visiting downloadcenter.netgear.com, entering your product model number in the **Enter a Product Name/Model Number** field, and clicking the magnifying glass to search.

Read the new firmware release notes to find out if you must reconfigure the switch after upgrading. The firmware upgrade method depends on the current firmware and boot loader versions on your switch.

➤ To upgrade the firmware:

1. Download the new firmware from the NETGEAR website.

You can check for the latest firmware version for your switch by visiting downloadcenter.netgear.com, entering your product model number in the **Enter a Product Name/Model Number** field, and clicking the magnifying glass to search.

2. Connect your computer to the same network as the switch.

You can use a WiFi or wired network connection, or connect directly to a switch that is off-network using an Ethernet cable.

3. Launch the ProSAFE Plus Utility using the desktop icon or tile.

The Switch Selection page displays a list of Web Managed (Plus) switches that it discovers on the local network.

4. Select the switch.

If you do not see the switch, click the **REFRESH** button.

5. Click the **APPLY** button.

You are asked to enter the password for the switch.

6. Enter the switch's password in the **password** field.

The switch's default password is **password**.

The Switch Status page displays.

7. If the firmware release notice specifies that you must reconfigure the switch, save the switch configuration settings.

For more information about how to save the switch configuration, see [Save the Switch Configuration](#) on page 42.

8. Select **System > Maintenance > Firmware Upgrade**.

The Firmware Upgrade page displays.

9. Click the **BROWSE** button and locate and select the firmware file.

10. Click the **APPLY** button.

**WARNING:**

To avoid the risk of corrupting the firmware, do not interrupt the upgrade. For example, do not turn off the switch or disconnect it.

When the upgrade is complete, your switch restarts. The upgrade process typically takes about three minutes.

Reboot the Switch

You can reboot the switch remotely.

➤ **To reboot the switch:**

1. Connect your computer to the same network as the switch.
You can use a WiFi or wired network connection, or connect directly to a switch that is off-network using an Ethernet cable.
2. Launch the ProSAFE Plus Utility using the desktop icon or tile.
The Switch Selection page displays a list of Web Managed (Plus) switches that it discovers on the local network.
3. Select the switch.
If you do not see the switch, click the **REFRESH** button.
4. Click the **APPLY** button.
You are asked to enter the password for the switch.
5. Enter the switch's password in the **password** field.
The switch's default password is **password**.
The Switch Status page displays.
6. Select **System > Maintenance > Device Reboot**.
The Device Reboot page displays.
7. Select the check box.
8. Click the **APPLY** button.
The switch reboots.

Save the Switch Configuration

You can save the switch configuration as a file. We recommend that you save the configuration. Then you can quickly restore the switch configuration if you change the settings and then decide to return the switch to its previous settings.

➤ **To save the switch configuration:**

1. Connect your computer to the same network as the switch.
You can use a WiFi or wired network connection, or connect directly to a switch that is off-network using an Ethernet cable.
2. Launch the ProSAFE Plus Utility using the desktop icon or tile.
The Switch Selection page displays a list of Web Managed (Plus) switches that it discovers on the local network.
3. Select the switch.
If you do not see the switch, click the **REFRESH** button.
4. Click the **APPLY** button.
You are asked to enter the password for the switch.
5. Enter the switch's password in the **password** field.
The switch's default password is **password**.
The Switch Status page displays.
6. Select **System > Maintenance > Save Configuration**.
The Save Configuration page displays.
7. Click the **BROWSE** button.
8. Select the location to save the configuration file (a `.cfg` file).
9. Click the **APPLY** button.
The switch configuration is saved.

Restore a Saved Switch Configuration

You can restore switch configuration that you saved.

➤ **To restore the switch configuration that you saved:**

1. Connect your computer to the same network as the switch.
You can use a WiFi or wired network connection, or connect directly to a switch that is off-network using an Ethernet cable.
2. Launch the ProSAFE Plus Utility using the desktop icon or tile.
The Switch Selection page displays a list of Web Managed (Plus) switches that it discovers on the local network.
3. Select the switch.
If you do not see the switch, click the **REFRESH** button.
4. Click the **APPLY** button.
You are asked to enter the password for the switch.

5. Enter the switch's password in the **password** field.
The switch's default password is **password**.
The Switch Status page displays.
6. Select **System > Maintenance > Restore Configuration**.
The Restore Configuration page displays.
7. Click the **BROWSE** button.
8. Find and select the configuration file (a `.cfg` file).
9. Click the **APPLY** button.
The saved configuration is restored to the switch. The switch reboots to load the restored configuration.

Restore Factory Default Settings

You can return the switch to its factory settings.

➤ **To restore factory settings:**

1. Connect your computer to the same network as the switch.
You can use a WiFi or wired network connection, or connect directly to a switch that is off-network using an Ethernet cable.
2. Launch the ProSAFE Plus Utility using the desktop icon or tile.
The Switch Selection page displays a list of Web Managed (Plus) switches that it discovers on the local network.
3. Select the switch.
If you do not see the switch, click the **REFRESH** button.
4. Click the **APPLY** button.
You are asked to enter the password for the switch.
5. Enter the switch's password in the **password** field.
The switch's default password is **password**.
The Switch Status page displays.
6. Select **System > Maintenance > Factory Default**.
The Factory Default page displays.
7. Select the check box.
8. Click the **APPLY** button.
The switch returns to its factory settings.

Enable Port Mirroring

Port mirroring lets you mirror the incoming (ingress) and outgoing (egress) traffic of one or more ports (the source ports) to a predefined destination port.

➤ **To enable port mirroring:**

1. Connect your computer to the same network as the switch.

You can use a WiFi or wired network connection, or connect directly to a switch that is off-network using an Ethernet cable.

2. Launch the ProSAFE Plus Utility using the desktop icon or tile.

The Switch Selection page displays a list of Web Managed (Plus) switches that it discovers on the local network.

3. Select the switch.

If you do not see the switch, click the **REFRESH** button.

4. Click the **APPLY** button.

You are asked to enter the password for the switch.

5. Enter the switch's password in the **password** field.

The switch's default password is **password**.

The Switch Status page displays.

6. Select **System > Monitoring > Mirroring**.

Port Mirroring Configuration					
Mirroring: Disable					
Source Port					
Port	01	02	03	04	05
	<input type="checkbox"/>	<input type="checkbox"/>	<input type="checkbox"/>	<input type="checkbox"/>	<input type="checkbox"/>
Destination Port: 					

The previous figure is an example. Your switch might provide more or less ports.

7. In the Source Port section, select one or more source ports by selecting the check boxes under the port numbers.

You can select more than one source port. You cannot select a source port that is a member of a LAG.

8. In the **Destination Port** menu, select the destination port.

You can select a single destination port only. You cannot select a destination port that is a member of a LAG.

9. In the **Mirroring** menu, select **Enable**.

By default, mirroring is disabled.

10. Click the **APPLY** button.

Your settings are saved.

View Switch Information

You can view the switch product name (model), MAC address, firmware level, DHCP mode, and other network information.

➤ To view information about the switch:

1. Connect your computer to the same network as the switch.
You can use a WiFi or wired connection.
2. Launch the ProSAFE Plus Utility using the desktop icon or tile.
The Switch Selection page displays a list of Web Managed (Plus) switches that it discovers on the local network.
3. Select the switch.
If you do not see the switch, click the **REFRESH** button.
4. Click the **APPLY** button.
You are asked to enter the password for the switch.
5. Enter the switch's password in the **password** field.
The switch's default password is **password**.
The Switch Status page displays.
6. Select **Switch Information**.

Switch Information	
Product Name:	
Switch Name:	
MAC Address:	DC:EF:09:E1:AE:D7
Firmware Version:	V1.0.0.2
DHCP Mode:	Enable <input type="checkbox"/> Refresh
IP Address:	192.168.100.195
Subnet Mask:	255.255.255.0
Gateway Address:	192.168.100.1

Note: To navigate to this page, select **System > Status > Switch Information**.

View the Port Statistics

For each switch port, you can view the bytes received, bytes sent, and cyclic redundancy check (CRC) error packets.

➤ **To view and clear the port statistics:**

1. Connect your computer to the same network as the switch.

You can use a WiFi or wired network connection, or connect directly to a switch that is off-network using an Ethernet cable.

2. Launch the ProSAFE Plus Utility using the desktop icon or tile.

The Switch Selection page displays a list of Web Managed (Plus) switches that it discovers on the local network.

3. Select the switch.

If you do not see the switch, click the **REFRESH** button.

4. Click the **APPLY** button.

You are asked to enter the password for the switch.

5. Enter the switch's password in the **password** field.

The switch's default password is **password**.

The Switch Status page displays.

6. Select **System > Monitoring > Port Statistics**.

Port Statistics			
Port Statistics			
Port	Bytes Received	Bytes Sent	CRC Error Packets
01	24661	5374	0
02	0	0	0
03	0	0	0
04	0	0	0
05	0	0	0
06	0	0	0
07	0	0	0
08	0	0	0

The previous figure is an example. Your switch might provide more or less ports.

7. To clear the port statistics, click the **CLEAR COUNTERS** button.

All statistics counters change to 0.

6. Diagnostics and Troubleshooting

This chapter covers the following topics:

- *Test Cable Connections*
- *Resolve a Subnet Conflict to Access the Switch*
- *Uninstall the ProSAFE Plus Utility*

Test Cable Connections

You can use the cable diagnostic feature to easily find out the health status of network cables. If any problems exist, this feature helps quickly locate the point where the cabling fails, allowing connectivity issues to be fixed much faster, potentially saving technicians hours of troubleshooting.

If an error is detected, the distance at which the fault is detected is stated in meters. (This is the distance from the port.)

➤ **To test a cable connection:**

1. Connect your computer to the same network as the switch.

You can use a WiFi or wired network connection, or connect directly to a switch that is off-network using an Ethernet cable.

2. Launch the ProSAFE Plus Utility using the desktop icon or tile.

The Switch Selection page displays a list of Web Managed (Plus) switches that it discovers on the local network.

3. Select the switch.

If you do not see the switch, click the **REFRESH** button.

4. Click the **APPLY** button.

You are asked to enter the password for the switch.

5. Enter the switch's password in the **password** field.

The switch's default password is **password**.

The Switch Status page displays.

6. Select **System > Monitoring > Cable Tester**.

Cable Tester			
Cable Tester			
<input type="checkbox"/>	Port	Test Results	Cable Fault Distance (meters)
<input type="checkbox"/>	01		
<input type="checkbox"/>	02		
<input type="checkbox"/>	03		
<input type="checkbox"/>	04		
<input type="checkbox"/>	05		
<input type="checkbox"/>	06		
<input type="checkbox"/>	07		
<input type="checkbox"/>	08		

The previous figure is an example. Your switch might provide more or less ports.

7. Select one or more check boxes.
8. Click the **TEST SELECTED PORT** button.

The switch tests the cable connection for the selected ports and displays the results. This process might take up to a few minutes.

Resolve a Subnet Conflict to Access the Switch

If you power on the switch before you connect it to a network that includes a DHCP server, the switch uses its own default IP address of 192.168.0.239. This subnet might be different from the subnet used in your network. You might see the following message if you try to use the ProSAFE Plus Utility to access the switch:

The switch and manager IP address are not in the same subnet.

➤ To fix this subnet conflict:

1. Disconnect the Ethernet cable between the switch and your network.
2. Unplug the switch's power cord.
3. Reconnect the Ethernet cable between the switch and your network.
4. Plug the switch's power cord into an electrical outlet.

The switch powers on. The network DHCP server discovers the switch and assigns it an IP address that is in the correct subnet for the network.

Uninstall the ProSAFE Plus Utility

You can uninstall the ProSAFE Plus Utility by using the Windows program uninstall feature.

➤ To uninstall the utility from a computer that runs a Windows 7 OS:

1. On your computer, select **Start > Control Panel > Programs and Features**.
2. Select **ProSafe Plus Utility**.
3. Click **Uninstall**.

You are prompted to confirm the uninstall.

4. Click the **Yes** button.

The utility is removed.

➤ To uninstall the utility from a computer that runs a Windows 8.0 OS:

1. On your computer, move over the lower left corner of your desktop and right-click **Start**.
2. Select **Programs and Features**.
3. Select **ProSafe Plus Utility**.
4. Click **Uninstall**.

You are prompted to confirm the uninstall.

5. Click the **Yes** button.

The utility is removed.

➤ **To uninstall the utility from a computer that runs a Windows 8.1 OS:**

1. On your computer, right-click **Start**.
2. Select **Programs and Features**.
3. Select **ProSafe Plus Utility**.
4. Click **Uninstall**.

You are prompted to confirm the uninstall.

5. Click the **Yes** button.

The utility is removed.

➤ **To uninstall the utility from a computer that runs a Windows 10 OS:**

1. On your computer, select **Start > Settings > System > Apps & features**.
2. Select **ProSafe Plus Utility**.
3. Click **Uninstall**.

You are prompted to confirm the uninstall.

4. Click the **Yes** button.

The utility is removed.